



Introducing our service

**Craig Mower / Nazalie Iqbal–
MedConnect North Project Managers**

Who we are



our offer

- Bespoke service to companies
- Guidance through the innovation pathway



our vision

- Expedite the launch of new tech and services
- Improve patient care
- Contribute to regional economy



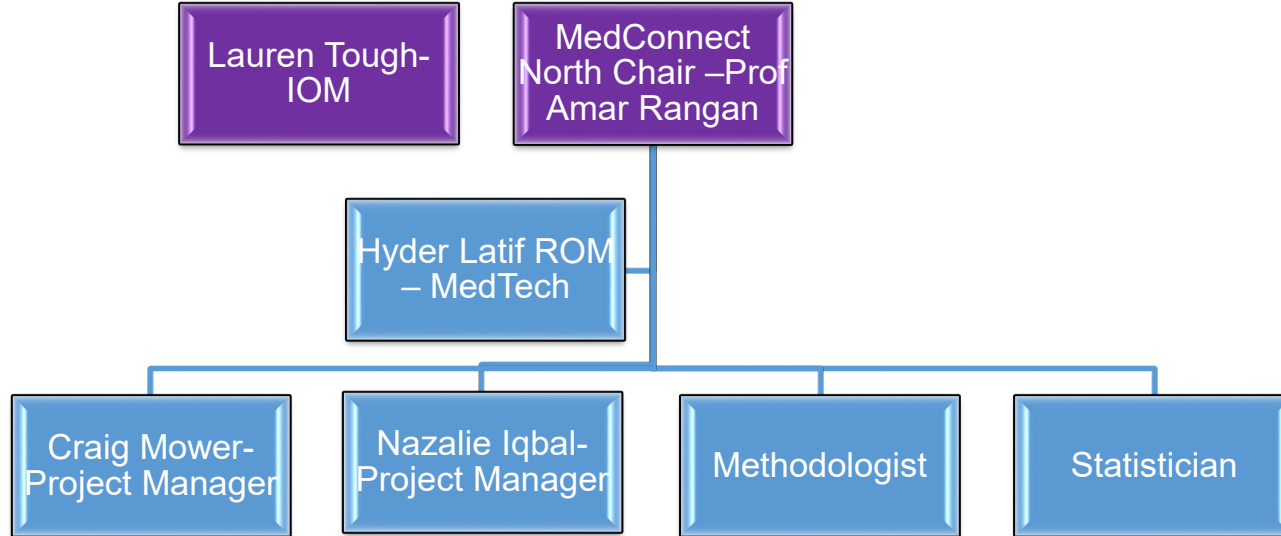
our funders

NIHR | Clinical Research
Network North East
and North Cumbria



**Academic Health
Science Network**
North East and North Cumbria

Meet the Team



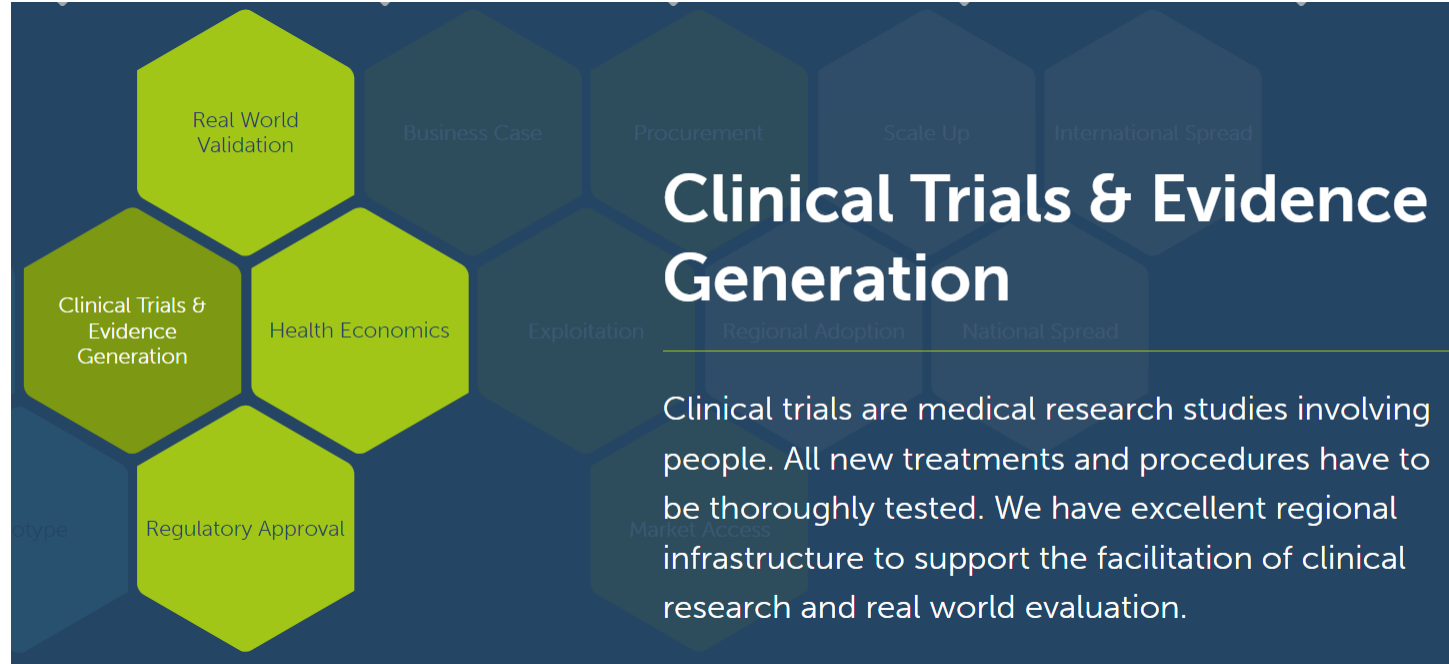
What We Offer



- High quality, tailored service to support Medical Technology clinical trials
 - Project management support
 - Advice and guidance on grant application
 - Supporting with ideas for potential clinical trials
-



Where MedConnect North fits in?



Specialities covered

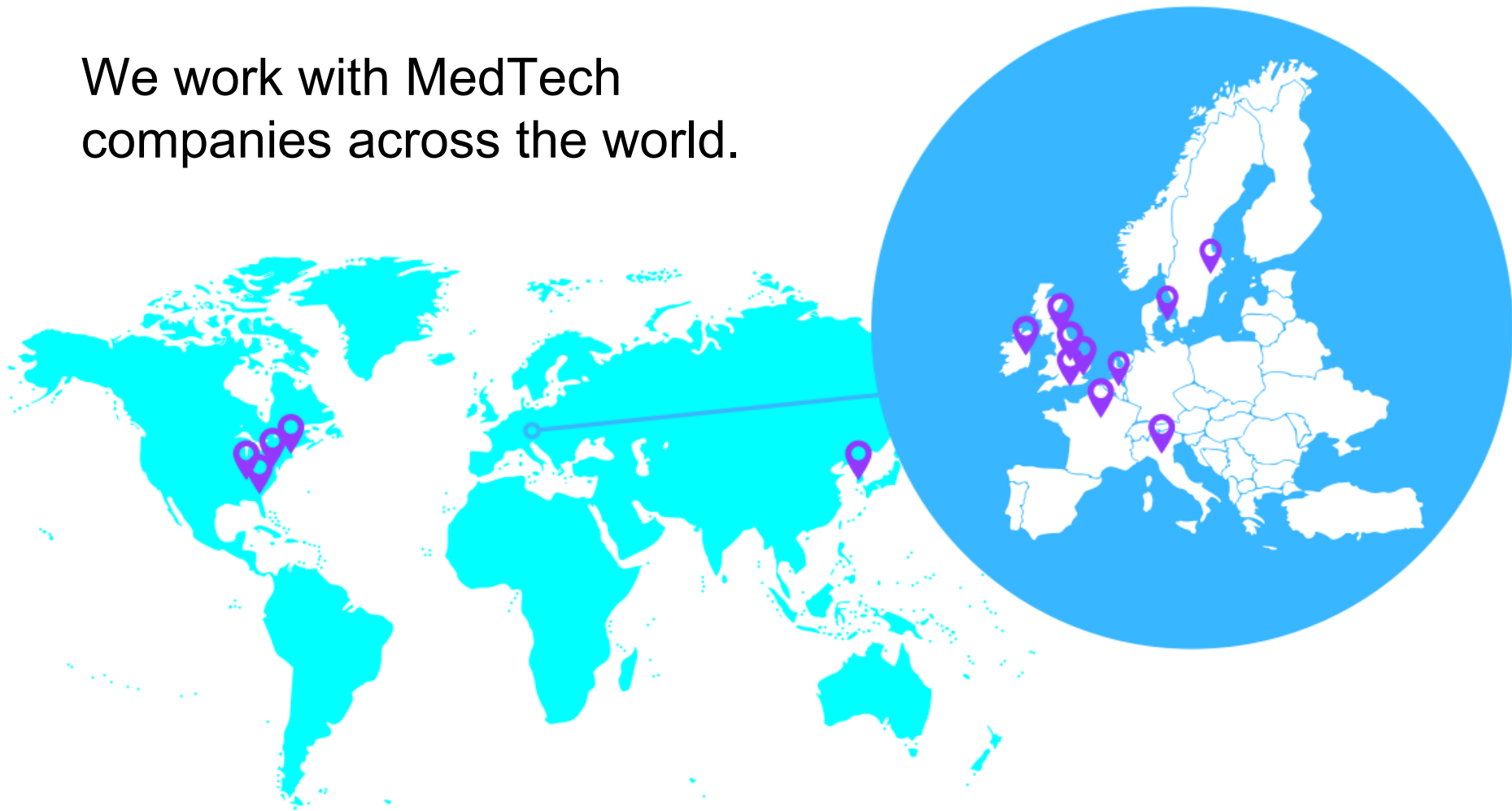


Cardiovascular disease; mental health; diabetes; surgery; cancer (colorectal, gynaecological, plastic, urology; anaesthesia; perioperative medicine and pain management



Leveraged over £2 million for the North East and North Cumbria since 2018

We work with MedTech companies across the world.



Pathway to MedConnect North

Types of referrals

NIHR Office for Clinical
Research
Infrastructure (Nocri)

AHSN Referral

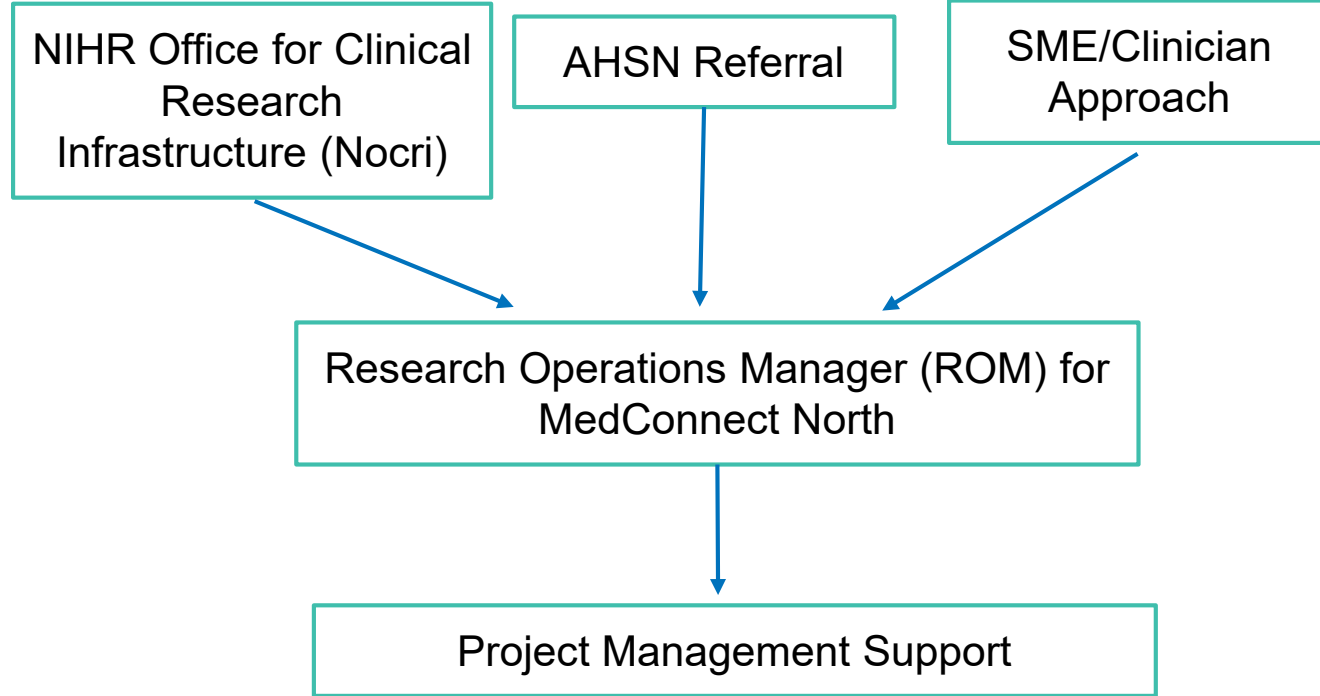
SME/Clinician
Approach

Initial meeting with MedConnect North

Research Operations Manager (ROM) for
MedConnect North

ROM gets project team involved in potential study

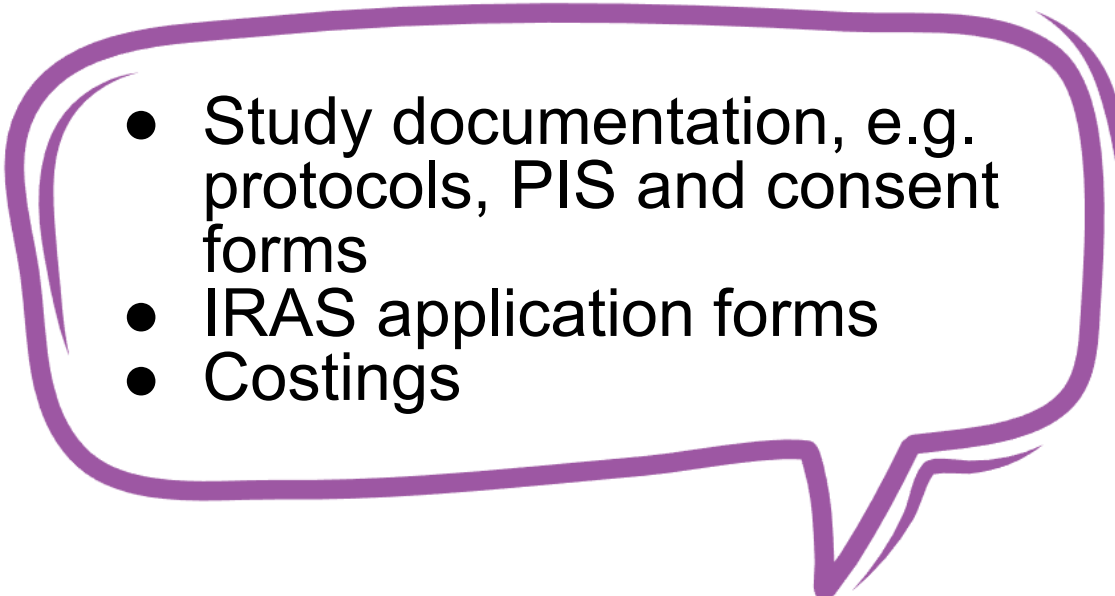
Project Management Support



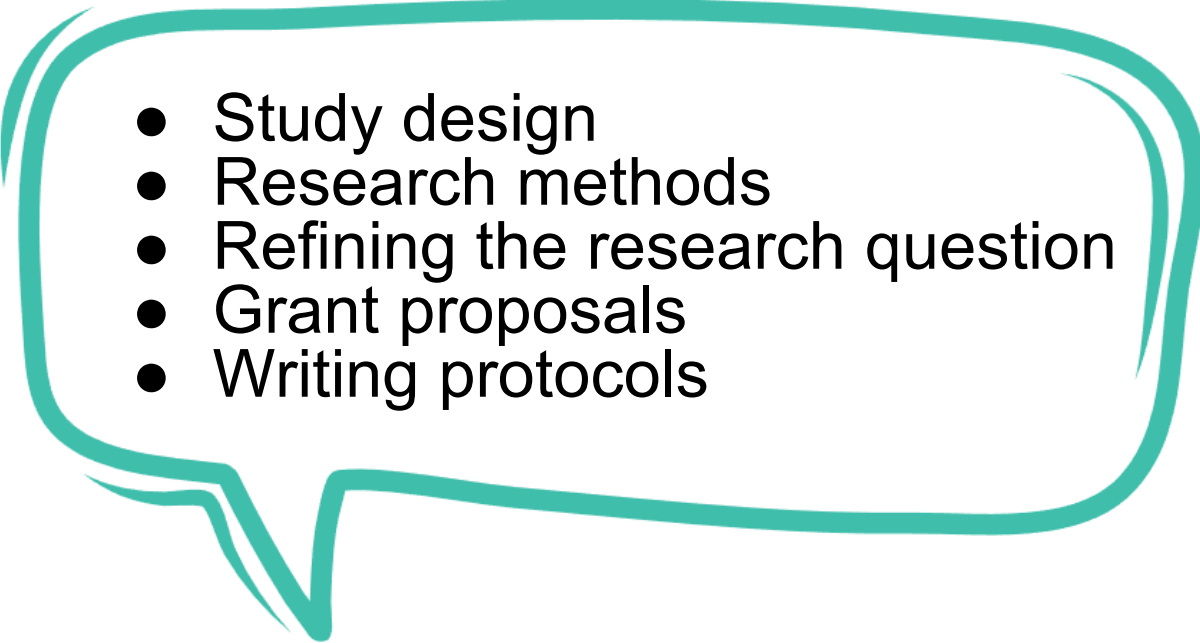
How and When do MedConnect North get involved?

- Initial engagement form
 - Funding
 - Study design
 - Early feedback
 - Technology Readiness Levels 5-8
-

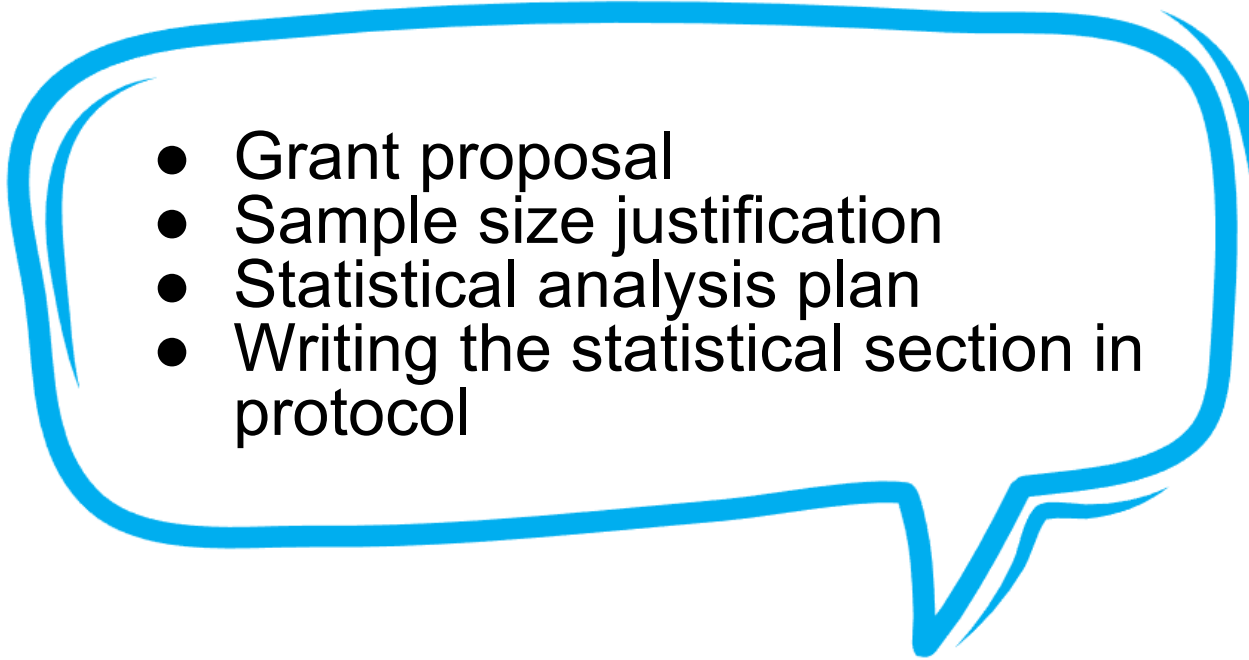
Project Management Support

- 
- Study documentation, e.g. protocols, PIS and consent forms
 - IRAS application forms
 - Costings
-

Methodologist Support

- 
- Study design
 - Research methods
 - Refining the research question
 - Grant proposals
 - Writing protocols
-

Statistics Support

- 
- Grant proposal
 - Sample size justification
 - Statistical analysis plan
 - Writing the statistical section in protocol
-

Case Study- Best

- Clinician idea for novel use of device
 - MedConnect North support was offered
 - Secured £15,000 as part of small pilot study
 - Best Study has now completed recruitment to target.
 - Best Study Multi site Amendment
 - £800,000 secured from company to run study
 - Multisite/Paediatric Study now in set up
-

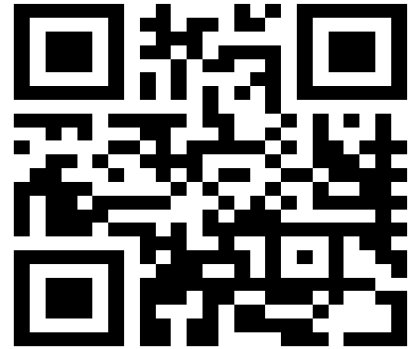
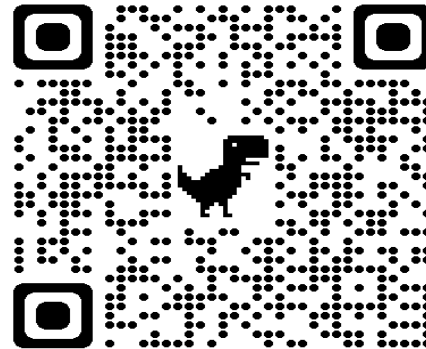
Contact us

Hyder Latif: Hyder.Latif@nihr.ac.uk

Craig Mower: craig.mower@nhs.net

Naz Iqbal: nazalie.iqbal1@nhs.net

medconnectnorth.com



Questions

- What makes a robust research proposal?
 - What barriers are you facing/ what are you encountering?
 - PPI – what's your understanding of this/ how would you embed this into your proposal/ application?
-